



TAJ
DUBAI



EXPERIENCE TAJNESS AT THE HEART OF DUBAI



INTRODUCTION

Taj Dubai is an intoxicating fusion of extravagance, heritage, and contemporary style with more than 3,000 pieces of stunning artwork and sculptures elegantly studded in this gem. The 296 rooms and suites are modern and luxurious and most of the rooms offer relaxed elegance with panoramic views of the majestic Burj Khalifa, and the dynamic Downtown skyline. The luxurious Indian-themed hotel in the heart of the Business Bay and the famed Downtown Dubai, a mere stroll from the Dubai Opera and Dubai Mall, seamlessly leaps the business-leisure divide. With just 15 kilometers away from Dubai International Airport, this lavish hotel brings the inimitable personalised and intuitive hospitality of the Taj to Dubai, the Emirates' most famous city.



ACCOMMODATION

LUXURY ROOMS

Offering views of the city skyline or Burj Khalifa, these 45-sqm rooms comprise handmade furniture and art that celebrate tradition.

LUXURY FAMILY ROOMS

Decorated in the sophisticated style of a personalised city residence, the spacious 58-sqm rooms are furnished in natural hues and adorned with Indian furniture, artwork and artefacts.

TAJ CLUB ROOMS

Designed for the modern business traveller, these 45-sqm rooms on the higher floors offer spectacular views of the Downtown and Burj Khalifa and you have access to the Taj Club Lounge, butler service & other facilities.

JUNIOR SUITES

Enjoy breathtaking views of Business Bay and ever-evolving city skyline from the living room and bedroom of these 65-sqm extravagantly furnished suites.

LUXURY JUNIOR SUITES

The epitome of luxurious residential-style living, these 82-sqm suites have an open-plan design with intricate 'jali' screens, hardwood flooring and rich furnishings, ideal for families.

LUXURY BURJ VIEW SUITES

Decorated in shades of blue and ivory, these 115-sqm suites have an unmatched view of the Burj Khalifa. Enjoy access to the Taj Club Lounge, butler service and other facilities.



GRAND LUXURY SUITES

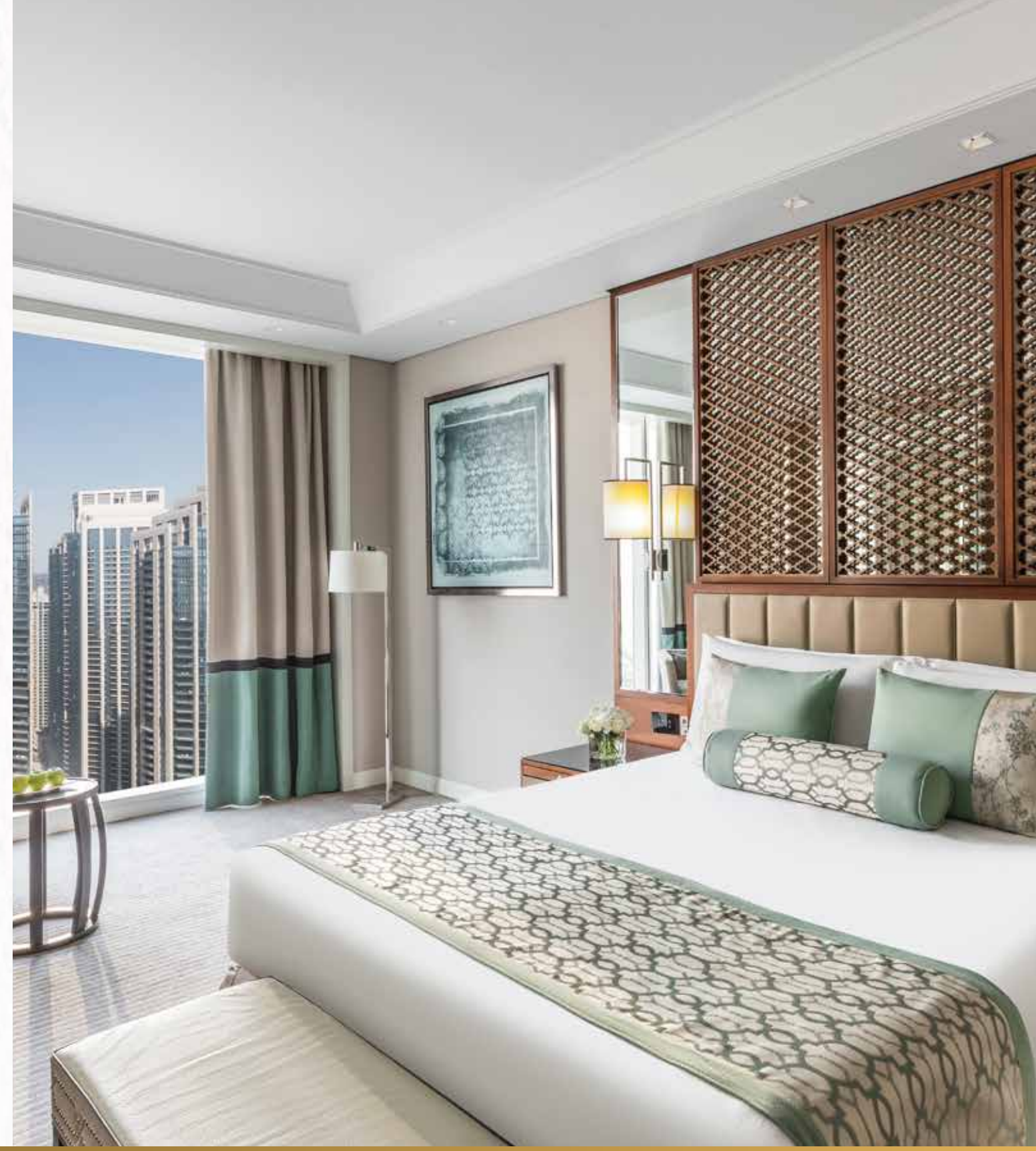
These 155-sqm one bedroom suites on the higher floors, offer panoramic views and are decorated with an artistic touch creating the warm ambience of a luxury residence.

MAHARAJA SUITE

The elegant 225-sqm suite, inspired by palaces in Rajasthan, features living and dining rooms, a pantry and a roof terrace on the 33rd floor of the hotel and special access to the Taj Club Lounge.

PRESIDENTIAL SUITE

The crowning glory of Taj Dubai, the 680-sqm Presidential Suite occupies the entire 35th floor with wonderful city views and has a dressing room, guest room, living room, dining room, office and gym.





DINING

THE ELOQUENT ELEPHANT

Enjoy a vast array of craft and draught hops. Indulge in wellcrafted British and international dishes at our gastro pub with outdoor terrace.

BOMBAY BRASSERIE

Hotel's award-winning signature restaurant and design kitchen, located exclusively on the fourth floor and serving the best of Indian cuisine prepared in the tandoor and sigri grill.



TREEHOUSE

An urban rooftop hideaway overlooking Burj Khalifa, Dubai Downtown and Business Bay skyline, with a hand-picked selection of creative cocktails, finest champagnes and wines accompanied by sumptuous Mediterr-Asian menu and live entertainment by the resident DJs, singers, saxophonist, and percussionist.

MISS TESS

Miss Tess is a restaurant of elevated Asian cuisine with main focus of Chinese, Japanese and Thai dining and daily live shows.

BILLIONAIRE DUBAI

A luxury lifestyle concept by Flavio Briatore featuring a nightclub, Italian restaurant and world famous Japanese cuisine by Sumosan.

MEDA

Celebrating the iconic Mediterranean spirit with a contemporary take on flavours of Spain, Italy and Greece, MEDA Tapas + Bar is open daily from 12 pm to 12 am on the first floor of the hotel.



MEETINGS AND BANQUETS

ALLEGRO

Perfect for smaller meetings or presentations accommodating up to 20 persons this soundproof venue has abundant natural light

CRESCENDO

Accommodating up to 20 persons, this room's modern facilities make for seamless meetings

OPERA BALLROOM

This elegant venue provides the perfect backdrop for fairy-tale wedding celebrations accommodating up to 300 guests

PRE-FUNCTION AREA

The large venue accommodating up to 100 guests is the ideal location for networking events and exhibitions



TREMELO BOARDROOM

Host meetings and conferences in a contemporary space with abundant natural light. The venue has a maximum capacity of up to 6 persons.

TAJ CLUB LOUNGE

Exclusively for guests staying in Taj Club Rooms or any suite, it is ideal for meetings in the lounge or boardroom.

THE CHAMBERS

This exclusive club is designed specifically to suit the needs of today's elite business traveller. Membership is by invitation only.

SECRET GARDEN

An al fresco venue with stunning views of Downtown which can accommodate up to 80 guests





EXPERIENCES

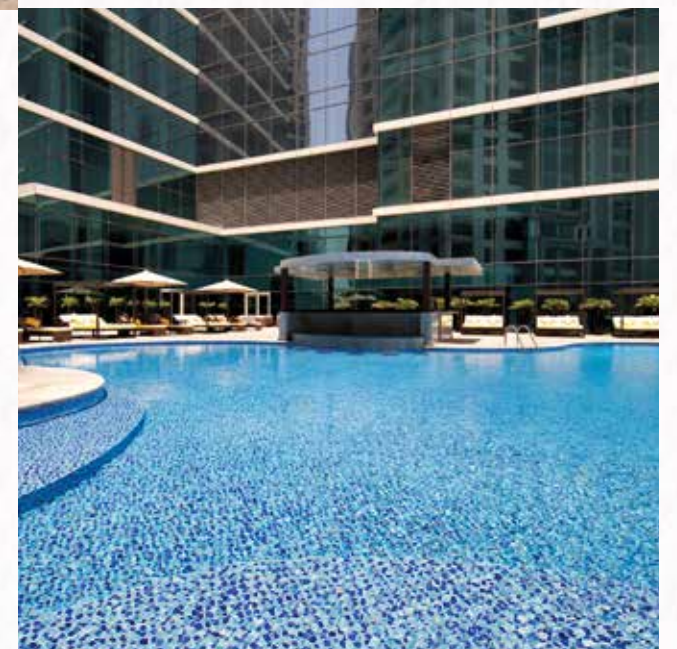
J WELLNESS CIRCLE SPA

Drawn from the rich wellness heritage of India, take a journey through an array of enlivening holistic treatments and meaningful rituals. Trained experts, using exclusive natural products, offer the Jiva Spa experiences. Trained experts, using exclusive natural products, offer the Jiva experiences across 5 treatment rooms.



J WELLNESS CIRCLE FITNESS CENTRE

Our Fitness Centre is located on the Pool Deck on the 3rd floor. It includes a gym, featuring Life Fitness and TRX machines for personal fitness and training, a swimming pool, a steam and sauna room. The Fitness Centre is connected with the Spa.





BURJ KHALIFA STREET, BUSINESS BAY, PO BOX 8489, DUBAI - UAE
PHONE: +971 4 438 3100 | FAX: +971 4 438 3200 | EMAIL: RESERVATIONS.TTHDXB@TAJHOTELS.COM | WWW.TAJHOTELS.COM